

# SHAMUS®

Version 12.0 ©1995-2010



*The Compliance Risk Management System*



**COMPLIANCETECH**  
ALL LENDERS ARE NOT ALIKE

*Developed by:*

CLC Compliance Technologies, Inc.

**1-800-499-4632**

# SHAMUS® 12.C

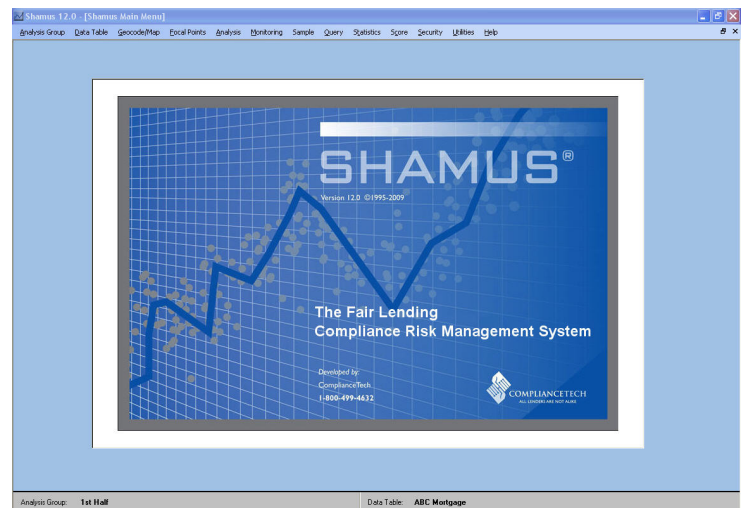
## What does the term “Shamus” mean?

The name “Shamus®” is an Irish slang for a policeman, private detective or investigator. Shamus® was designed to be consistent with the Equal Credit Opportunity Act (ECOA), the Fair Housing Act (FH Act) and Interagency Fair Lending Examination Procedures (FLEXPRO). Shamus® allows users to capture all of the critical data associated with a loan file, such as product terms, credit history, and collateral value. The knowledge built into the application guides users to ask the right questions, produce meaningful reports and compile information to make decisions about fair lending compliance. The Shamus® application incorporates regulatory guidance, discrimination case law, evidentiary elements from settlements and ComplianceTech’s knowledgebase of potentially disparate lending practices. Thus, you should consider Shamus® as your in-house detective for determining compliance with ECOA, FH ACT and FLEXPRO.

The low cost and easy to use Shamus® automates compliance and fair lending risk analysis for all types of loans. Shamus® conducts self-evaluations that lead to effective management of lending policies and practices. The application isolates pricing, underwriting, processing and customer service issues. Shamus® was designed by lending experts with many years of field experience performing loan due diligence, underwriting, exam readiness consulting, quality assurance and secondary market risk analysis.

## Primary purposes of Shamus®

1. **Provide a low cost and easy to use fair lending solution for institutions/organizations of all sizes**
2. **Institutions can self-monitor for lending practices that bank examiners and enforcement agencies consider discriminatory**
3. **Allows examiners and enforcement agencies to identify potentially discriminatory lending practices**
4. **Guides institutions to appropriate corrective action**
5. **Conducts powerful descriptive analyses using matched pairs, statistics, mapping, and specialized queries.**



## Loans Types Analyzed by Shamus®

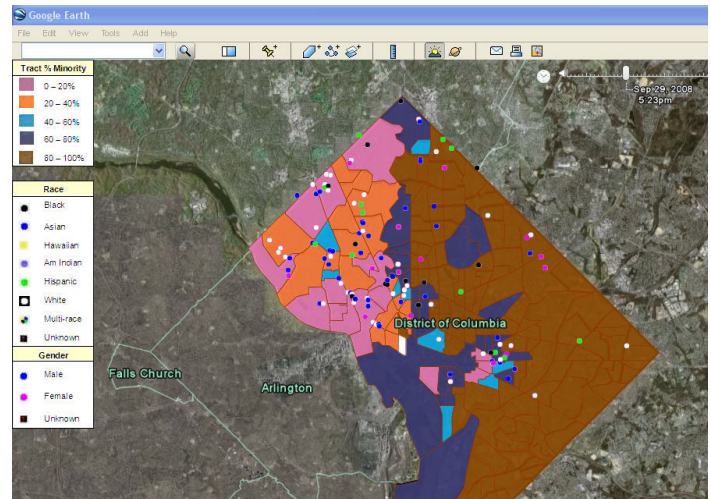
Separate programs are available for various types of loans and separate modules are available for Raw HMDA Loan Level Analysis and Loan Modification/Quality Control. Each program has a separate record layout and data requirements and can be used independently. The specific modules include:

1. Mortgage
2. Auto
3. Consumer
4. Small Business
5. Raw HMDA Loan Level Analysis (HMDA Data)
6. Loan Modification/Quality Control (Servicing Data)

## Essential features of Shamus®

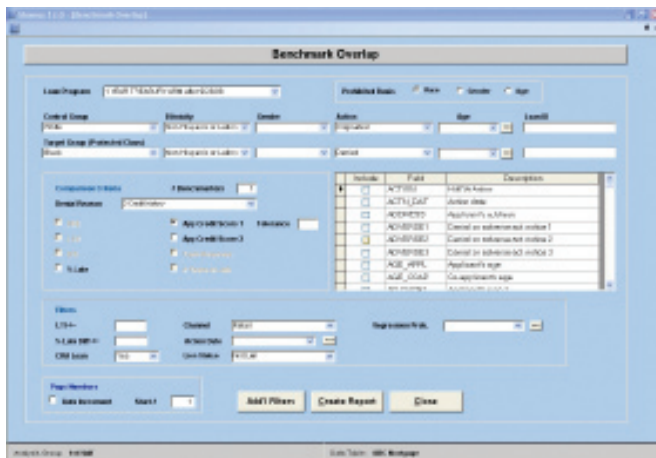
1. It's a rapid method for performing comparative analysis of individual loan files
2. Shamus® allows the user to conduct matched pair and benchmark overlap analyses of similarly situated prohibited and non-prohibited group applicants while controlling for underwriting and pricing factors.
3. Shamus® pinpoints areas where unfair lending may be a consistent problem in an institution.
  - **Identifies the type of loan products and branch locations where problem lending appears.**
  - **Identifies all the parties associated with an application: loan officer, underwriter, processor, appraiser, and brokers**
  - **Determines whether group differences are statistically significant**

4. Easy Mapping and Geo-coding
5. Statistical Analysis
6. Compatible with Windows 2000 and higher and Microsoft Office® XP and higher



*Well Organized Approach to Lending Risk*

- Manage and organize an entire comparative loan file review from sample selection to data collection, file retrieval, file review, data entry and analysis
- Conduct fair lending focal point analysis consistent with the Interagency Fair Lending Examination Procedures (FLEXPRO)
- Produce Benchmark/Overlap Reports to mirror bank examiners' approaches



- Conduct statistical analysis and evaluate regression models

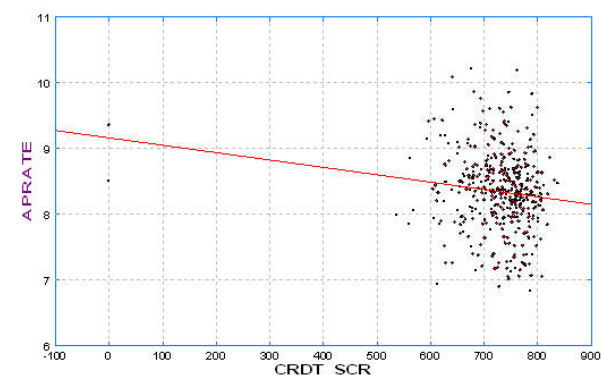


- Audit HMDA data integrity with the HMDA scrub module
- Analyze lending performance of loan officers, brokers, underwriters and processors
- Effectively control for fluctuations in interest rates in pricing analyses
- Easily identify brokers with predatory lending patterns
- Evaluate equal levels of assistance

Separate Variance t-Test				
	Cases	Mean	Standard Deviation	Standard Error
White, Exclude Hispanic, APRATE	241	8.3042	0.5737	0.0376
Black, Exclude Hispanic, APRATE	137	8.4891	0.6195	0.0526
Total	378	8.2967	0.5991	0.0330

t-Statistic = -3.2838  
 Degrees of Freedom = 286.8636  
 2-Tail Probability = 0.0026

Difference between means = -0.1848  
 95% Confidence Interval = -0.2714 -0.0983



# SHAMUS® 12.C

## *Flexible Software Tool*

- Manage data effectively with limited need for Information Systems support
- Import existing data and export enhanced Shamus® data for further analysis
- Store and document underwriting rules
- Full integration with Microsoft Office® Suite
- Use free-form queries to answer novel questions from management
- Built-in data quality tools essential for reliable compliance analysis

## *Minimum hardware requirements*

- Pentium 4 processor or higher
- 1 GB of RAM
- 50 GB of free hard drive space (hard disk capacity sufficient to manage the database you will be importing and creating)

Contact us today to schedule an Online Demonstration: 800-499-HMDA (4632)

